

Fire Retardant Chemical Technologies LLC

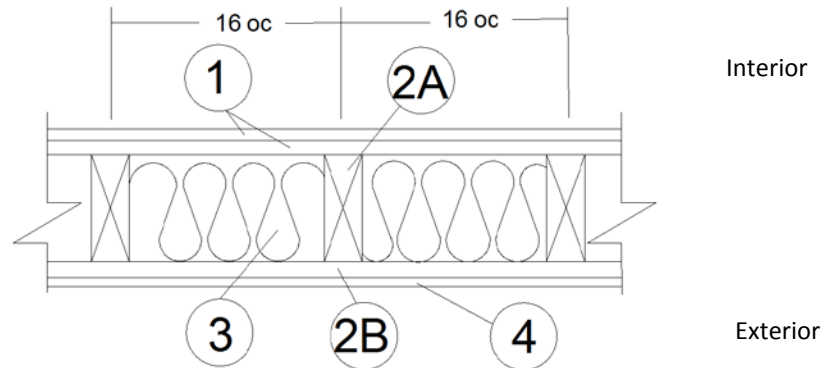
Design No. FRCT/FRWT 120-02

Fire Retardant Wood

FlameTech™ Lumber and Plywood

ASTM E119

**Rating: 2 Hour Load Bearing from the Interior and 1 Hour Load Bearing from the Exterior
(2015 NDS - F_c 0.96 for FRWT)**



1. GYPSUM BOARD (Interior): Two layers USG Firecode® C Core, complying with ASTM C1396, or equivalent, min. 5/8 in. thick, 4 ft. wide applied vertically, fastened to framing. Face layer joints staggered with base layer and covered with paper tape and joint compound.

FASTENERS (Not Shown):

- A. FACE LAYER – Min. #6 × 2 in. long Type S or W screws spaced max. 8 in. on center (oc) and heads covered with joint compound.
- B. BASE LAYER – Min. #6 × 1-5/8 in. long Type S or W screws, spaced max. 6 in. oc.

2. CERTIFIED MANUFACTURER: Fire Retardant Chemical Technologies LLC.

CERTIFIED PRODUCT: FlameTech™

2A. CERTIFIED MODEL: FlameTech Lumber

FlameTech Lumber is min. 2×4 in. nominal wood studs spaced 16 in. oc, or 2×6 in. nominal wood studs spaced 24 in. oc, double top plates and single bottom plate fastened together with 16d common nails (3-1/2 in. × 0.162 in.), 16d box nails (3-1/2 in. × 0.135 in.), or 12d ring nails (3-1/4 in. × 0.135 in.).

2B. CERTIFIED MODEL (Exterior): FlameTech Plywood

FlameTech Plywood, min. 15/32 in. thick, applied vertically over the specified framing with min. 2-3/8 in. long, 0.113 in. diameter nails, spaced max. 8 in. oc around the perimeter and max. 12 in. oc in the field. Horizontal joints must be blocked.

3. INSULATION: Fiberglass batt insulation min. 3-1/2 in. thick R-13 friction fit between the studs. If 2×6 in. nominal wood studs are used, fiberglass batt insulation shall be min. 5-1/2 in. thick.

4. EXTERIOR FACINGS: Materials installed in accordance with manufacturer’s installation instructions:

- 3/4 in. thick cement plaster (1:4 ratio of cement to sand for scratch coat and 1:5 ratio for brown coat)
- Nominal 2.7 in. thick solid brick fastened using min. 22 GA wall ties
- Nominal 2.3 in. thick hollow brick fastened using min. 22 GA wall ties