

**Performance Formulation Solutions LLC**

**Design No. FRCT/FRWT 120-01**

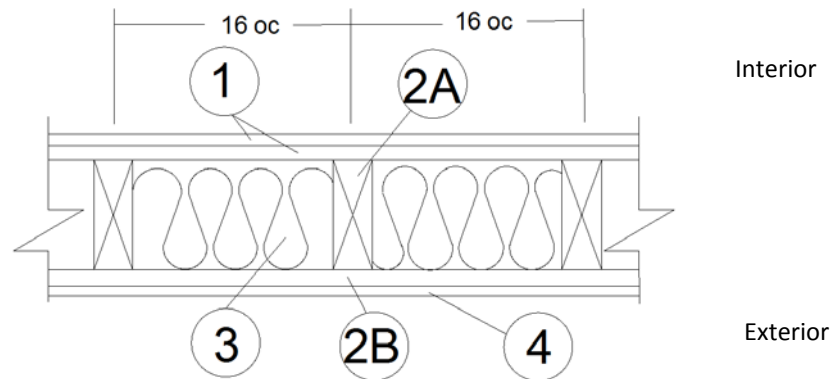
**Fire Retardant Wood**

**FlameTech™ Lumber and Plywood**

**ASTM E119**

**Rating: 2 Hour Load Bearing (2015 NDS - F<sub>c</sub> 0.96 for FRWT)**

**Rated From One Side (Interior Side Only)**



**1. GYPSUM BOARD (Interior):** Two layers USG Firecode® C Core, complying with ASTM C1396, or equivalent, min. 5/8 in. thick, 4 ft. wide applied vertically, fastened to framing. Face layer joints staggered with base layer and covered with paper tape and joint compound.

**FASTENERS (Not Shown):**

- A. FACE LAYER – Min. #6 × 2 in. long Type S or W screws spaced max. 8 in. on center (oc) and heads covered with joint compound.
- B. BASE LAYER – Min. #6 × 1-5/8 in. long Type S or W screws, spaced max. 6 in. oc.

**2. CERTIFIED MANUFACTURER:** Fire Retardant Chemical Technologies LLC.

**CERTIFIED PRODUCT:** FlameTech™

**2A. CERTIFIED MODEL:** FlameTech Lumber

FlameTech Lumber is min. 2×4 in. nominal wood studs spaced 16 in. oc, or 2×6 in. nominal wood studs spaced 24 in. oc, double top plates and single bottom plate fastened together with 16d common nails (3-1/2 in. × 0.162 in.), 16d box nails (3-1/2 in. × 0.135 in.), or 12d ring nails (3-1/4 in. × 0.135 in.).

**2B. CERTIFIED MODEL (Exterior):** FlameTech Plywood

FlameTech Plywood, min. 15/32 in. thick, applied vertically over the specified framing with min. 2-3/8 in. long, 0.113 in. diameter nails, spaced max. 8 in. oc around the perimeter and max. 12 in. oc in the field. Horizontal joints must be blocked.

**3. INSULATION:** Fiberglass batt insulation min. 3-1/2 in. thick R-13 friction fit between the studs. If 2×6 in. nominal wood studs are used, fiberglass batt insulation shall be min. 5-1/2 in. thick.

**4. EXTERIOR FACINGS (Optional):** Materials installed in accordance with manufacturer’s installation instructions:

- Masonry brick veneer or concrete
- Portland cement or synthetic stucco systems with self-furring metal lath or adhesive base coat
- Hardboard, wood structural panel, plywood, or fiber-cement siding
- Metal siding
- Vinyl siding – exterior plastic